

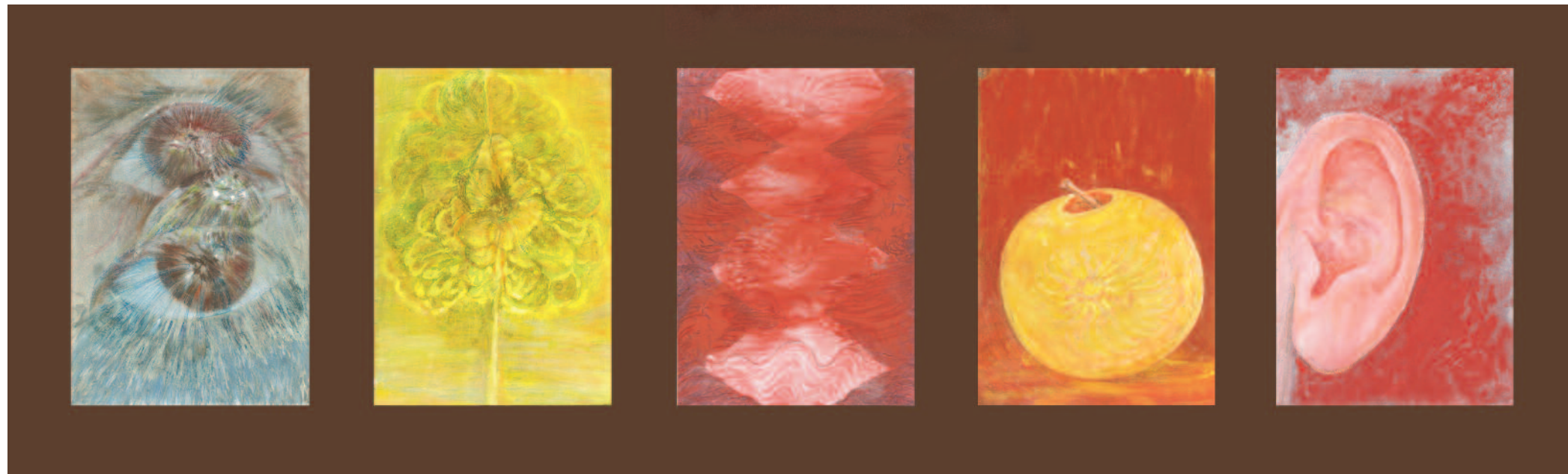


THE WORLD'S  
FINEST COLLECTORS  
ENTRUST THEIR ART TO US

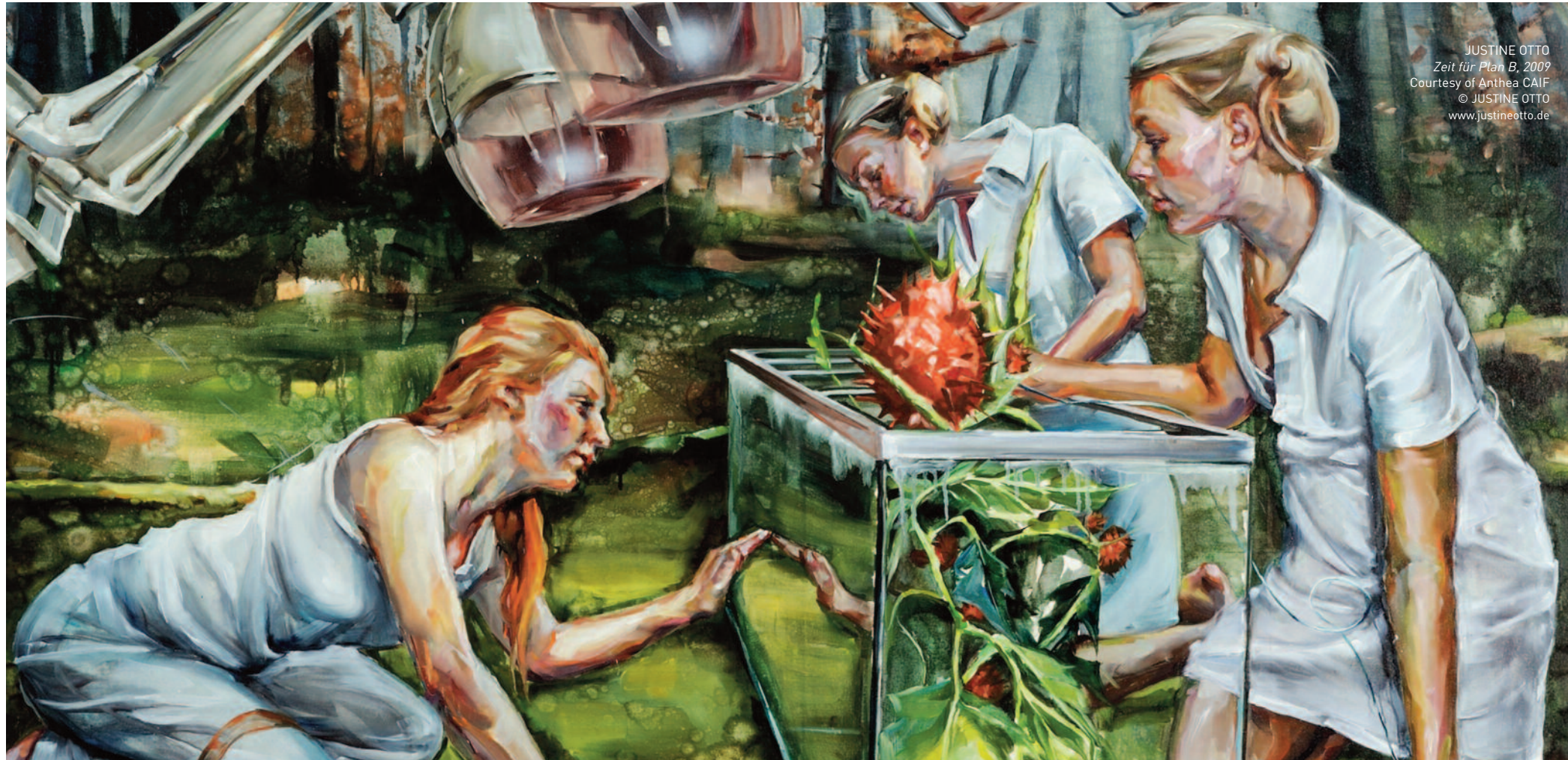
## SERVING THE FINEST AND MOST SOPHISTICATED COLLECTORS

Anthea Art Investments AG is an advisory boutique offering specialized services to art collectors for the management and growing of their art collections. We tailor-make specific strategies to meet the needs of each of our clients.

In partnership with the most established art logistic operators, Anthea offers to collectors a One-Stop-Solution approach which, as well as proving its art collection management services, also includes high standard shipping services and warehousing facilities.



ELLY STRIK  
*Dear Mystery. To Jean-Christophe, 2014-15*  
Dedicated to Jean-Christophe Ammann  
Courtesy of the artist  
© ELLY STRIK - [www.ellystrik.com](http://www.ellystrik.com)



JUSTINE OTTO  
*Zeit für Plan B, 2009*  
Courtesy of Anthea CAIF  
© JUSTINE OTTO  
www.justineotto.de

*"Art collecting is ... a passion to be pursued with discipline."*

*Arthur Sackler, scientist and art collector*

## VALUATION

Anthea specialists' team can provide a range of comprehensive appraisals and valuations for sale, insurance, collateral loan, estate tax, gift tax and charity donation purposes.

Each collection or individual art work requires a specific approach. Anthea tailors its service to the client's needs according to the scale and content of their collection.

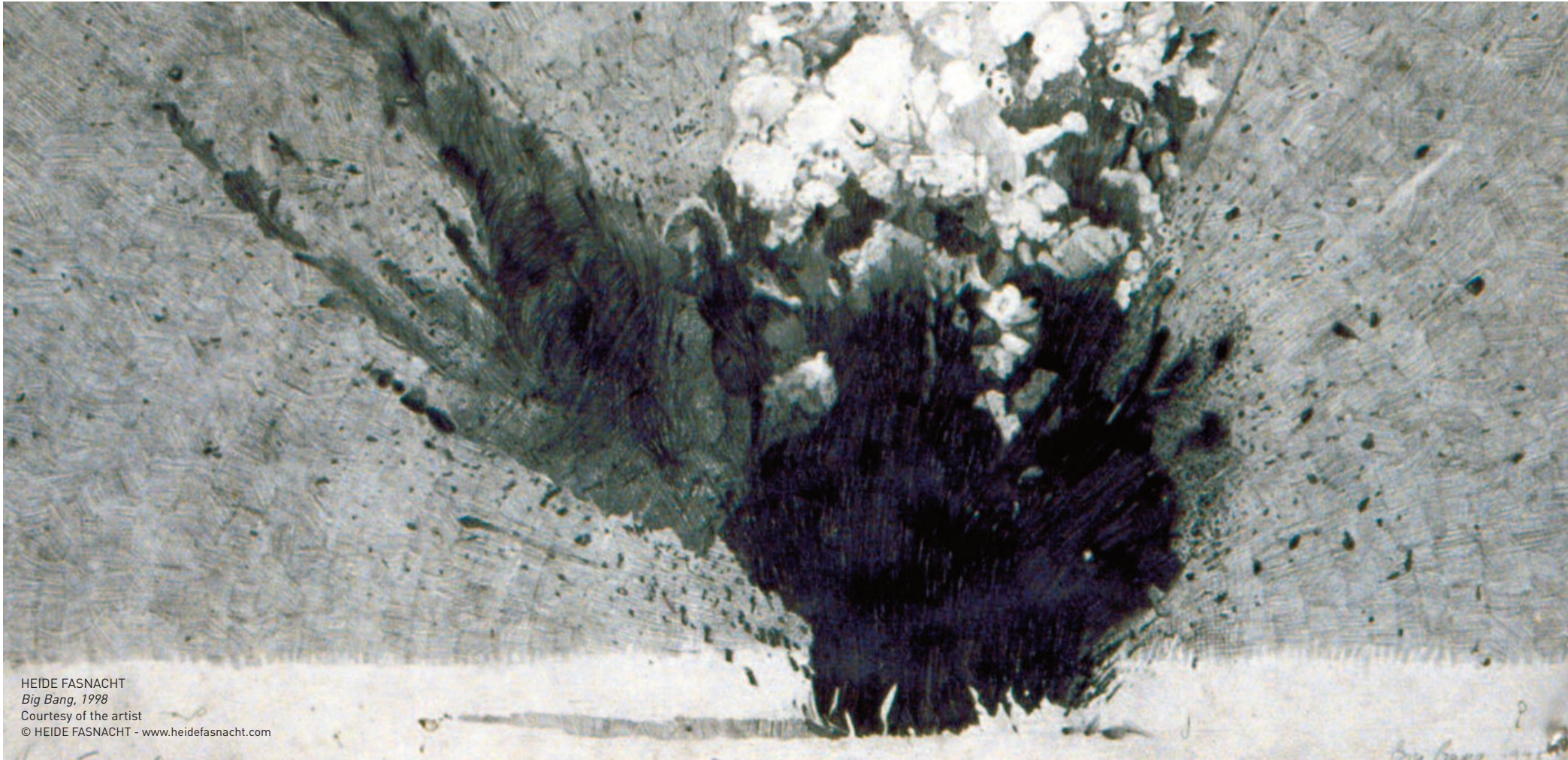
## AUTHENTICITY, ATTRIBUTION AND PROVENANCE

Anthea works with the most recognized art experts, academics and scientists to offer its clients unparalleled expertise for authenticity certifications, attribution and provenance researches. As the art market becomes more

efficient and sophisticated, documentary evidence for authenticity and provenance of your art holdings is crucial to protect and enhance the economic value and avoid legal and title issues.



ANDREA MELDOLLA  
also known as LO SCHIAVONE (Attr.)  
*The Lamination of Christ, 1550 ca.*



HEIDE FASNACHT  
*Big Bang*, 1998  
Courtesy of the artist  
© HEIDE FASNACHT - [www.heidefasnacht.com](http://www.heidefasnacht.com)

## DEACCESSIONS

Anthea has conducted a number of successful sales, both for individual works and entire collections. We help our clients find the best sale strategy, including auction and private sale, to

maximize the outcome. Our network of contacts includes private collectors, art advisors, museums, art dealers and auction houses, as well as family offices and art investors.

## ART FINANCING

Anthea is available to advise on financing options and help you to negotiate the best and most competitive rates, terms and conditions.

This may include financing an art acquisition or raising funds to diversify your sources of funding through a loan against the value of your art collection.



THOMAS RITZ  
*Vom Ort der Bilder, 2008*  
Installation view, Kunstfelden  
Courtesy of the artist  
© THOMAS RITZ - [www.thomas-ritz.ch](http://www.thomas-ritz.ch)



ELLY STRIK  
"Elly Strik. Ghosts, Brides and other Companions"  
Exhibition view  
Museo Nacional Centro de Arte Reina Sofía, Madrid  
© ELLY STRIK - [www.ellystrik.com](http://www.ellystrik.com)

## ART ADVISORY & ACQUISITIONS

With our team of worldwide recognized art experts, we help to start and expand our clients' art collections. We highlight artists with high potential value appreciation and select the most representative works within the

artist's production. We can also assist with the procurement of artworks in line with your collecting strategy through both auctions and private sales, including carrying out thorough pre-acquisition due diligences.

*"Art collecting is... when you need storage space."*

*Nancy Oliver, art collector and philanthropist*

## FINE ART LOGISTICS, SUITABLE TO YOUR NEEDS...

In partnership with the most established art logistic operators, Anthea makes available to its clients a comprehensive range of shipping solutions and warehousing facilities. Specifically in

Switzerland, we can guide you through the benefits of the Swiss "Free Port" regime, allowing exemption from custom duties, VAT and export limitations.







Mike Winkelmann (aka Beeple), Everydays: The First 5,000 Days, 2021

## NFTS INVESTMENT ADVISORY

Through a dedicated NFTs Research & Analytics department, we provide valuation services either for individual NFT or larger portfolios. Anthea also provides advisory on acquisitions, de-

accessions and tailor-made investment strategies. Our investment and valuation methodology are based on Anthea's proprietary "rarity score/market performance" matrix analysis.

## BESPOKE QUALITY SERVICES

Anthea offers strategic advisory to streamline the management of your art holdings and ensure that your long-term collecting objectives are reached. We help collectors with a range of complex issues, from authen-

ticity and attribution to implementing effective sale strategies. Anthea will also provide you with access to a selected network of trusted professionals including art restorers, insurers and photographers.





WOLFGANG HAMBRECHT  
*Hausboot, 2010*  
Courtesy of Anthea CAIF  
© WOLFGANG HAMBRECHT  
[www.wolfganghambrecht.de](http://www.wolfganghambrecht.de)

## LONG TERM STRATEGY

Pre-acquisition, post-sale, buying or selling Anthea will assist you throughout the process. Our specialist advisors

and senior managers will work with you on your art collecting strategy to ensure a smooth plan of action.

*Your collections, our motivation*



[www.anthea.art](http://www.anthea.art)